

5.1 Block and field management

It allows the creation of real customized forms aimed at receiving and historicizing the data entered (in this case) by CRM or external users (Figure 1).

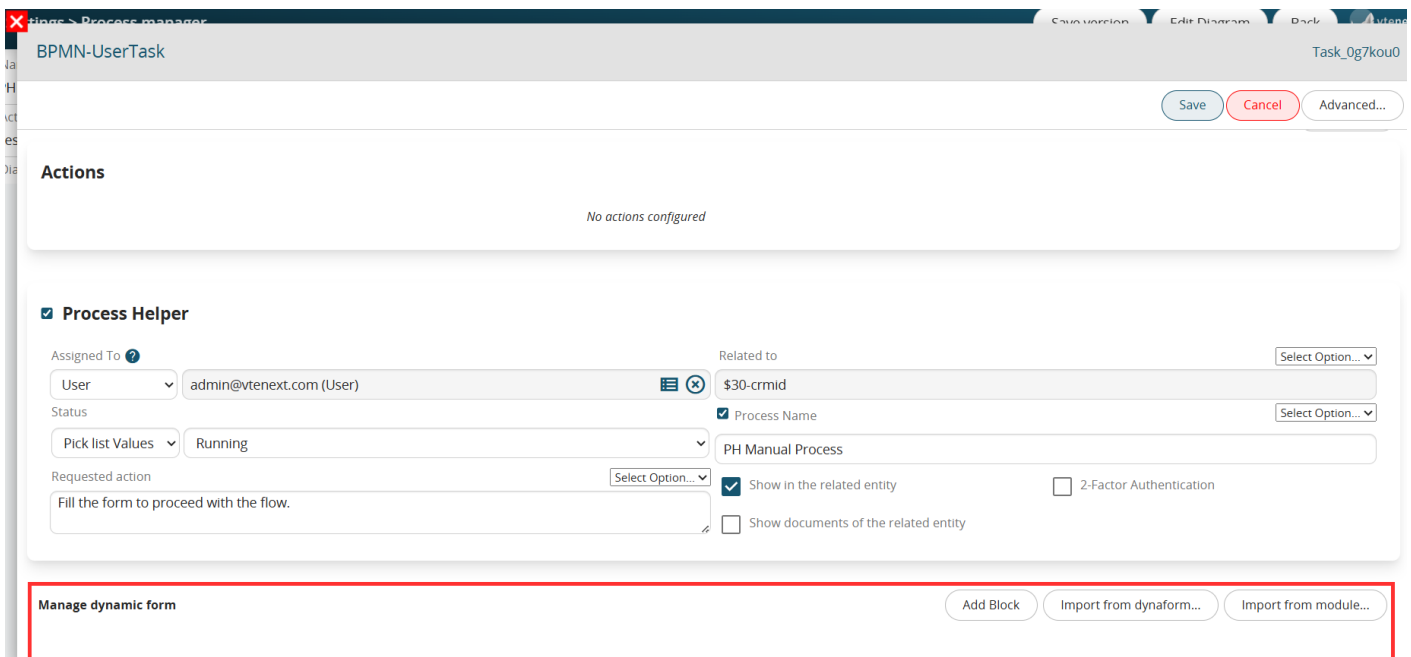


Figure 1

The configuration interface is identical to the Layout Editor section used for configuring modules (chapter 17.7 of the Vtenext general manual).

“ADD BLOCK” BUTTON

Using the “Add block” button, it will be possible to create a block, or the “base” within which individual fields or tables can be created (Figure 2).

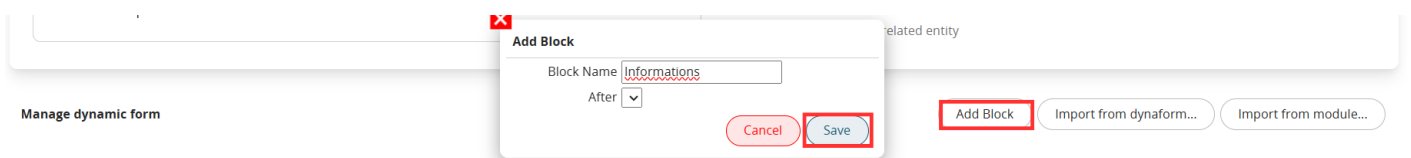


Figure 2

Once a block has been created, a series of buttons will be made available to the right of the block name for creating/moving/deleting individual fields within it (Figure 3).



Figure 3

Specifically:

- **Edit** button → allows you to change the block name (Figure 4)

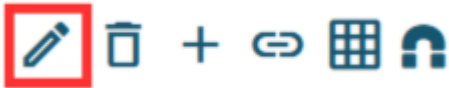


Figure 4

- **Trash** button → allows you to delete the block (Figure 5)

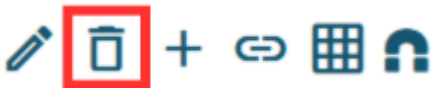


Figure 5

- **Add field** button → allows you to create a field of one of the different types available (Figure 6), for further information see the section “Custom field types” of chapter 17.7 of the general Vtenext manual

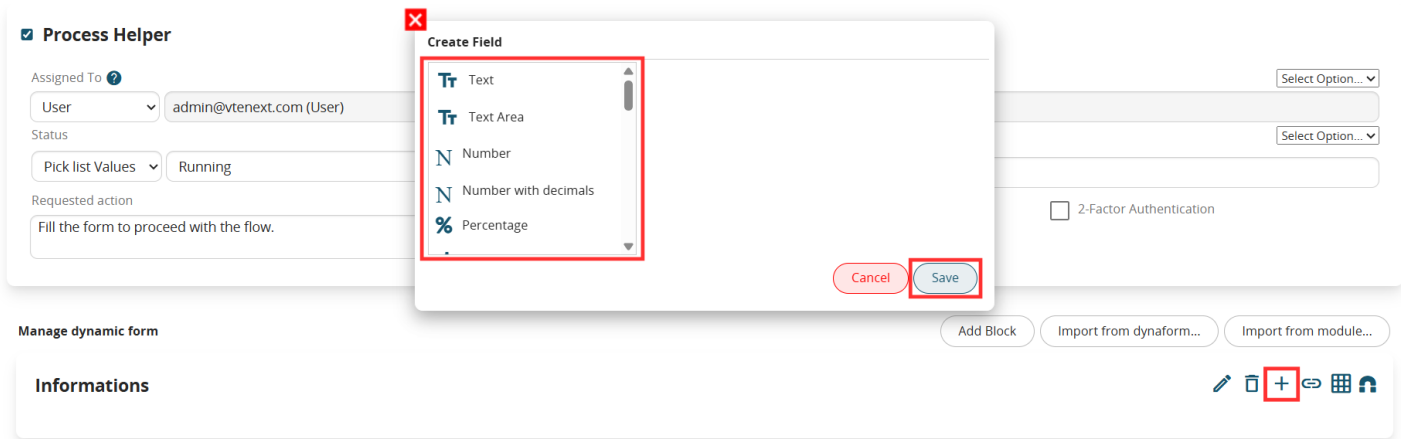


Figure 6

- **Add relation field** button → allows you to quickly create a field of the “Related to” type (Figure 7)

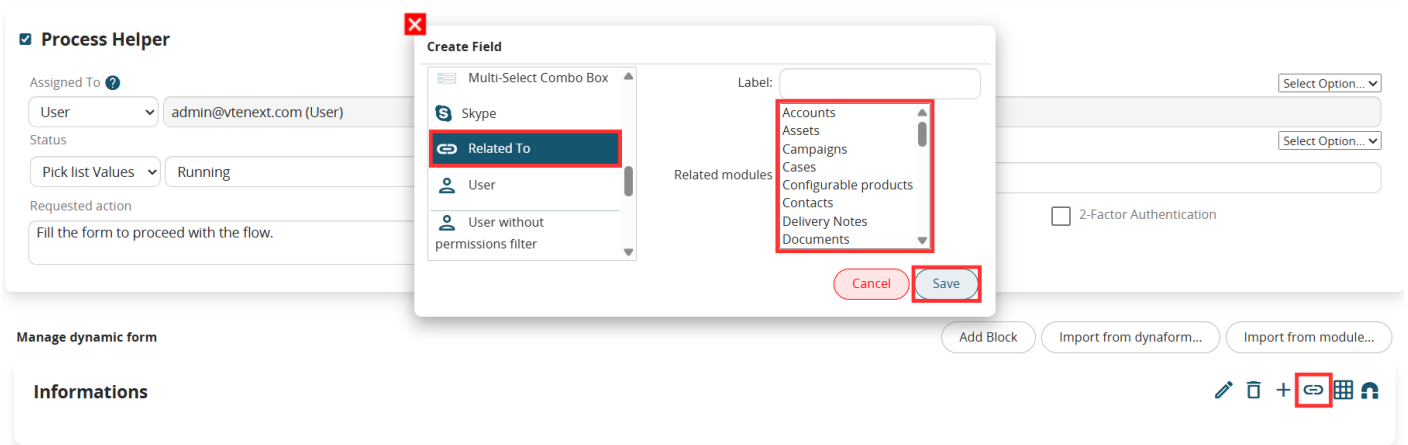


Figure 7

-**Add Table Field** Button → allows you to quickly create a table field (Figure 8 and 9)



Figure 8

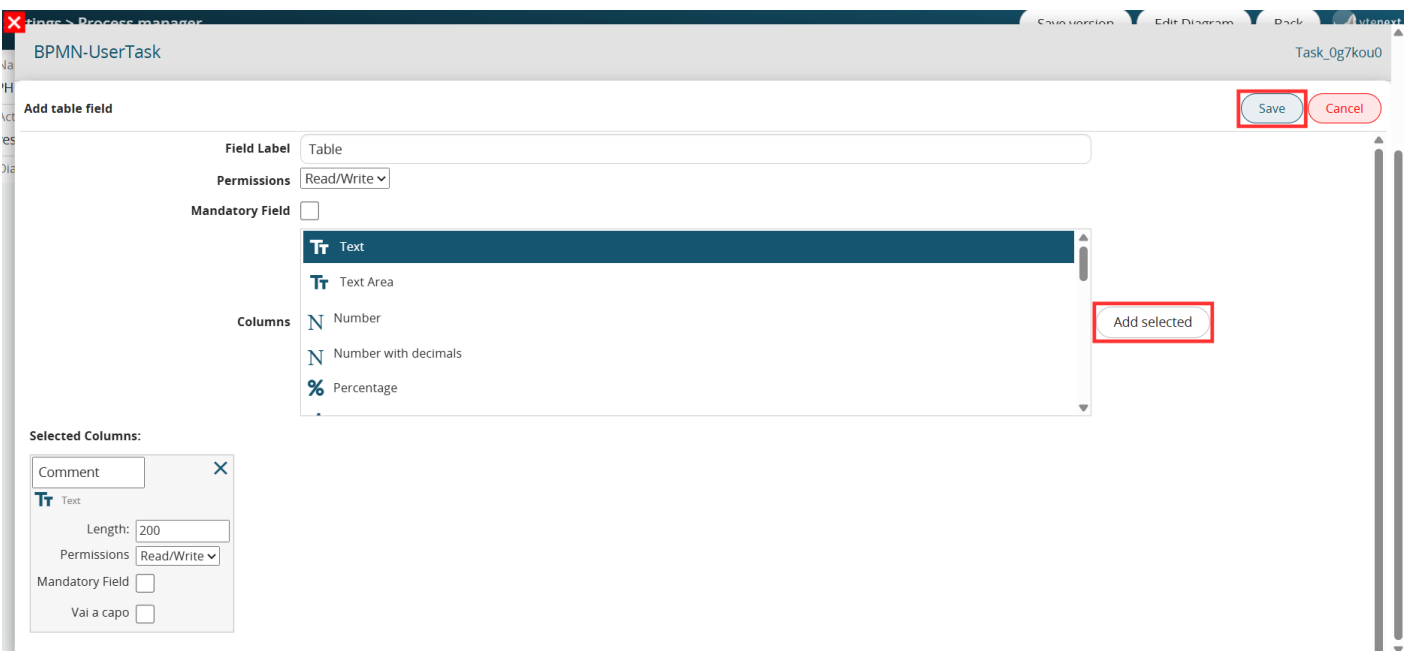


Figure 9

-**Move Fields** button → allows you to move individual fields from one block to another of the same dynamic form (Figure 10)

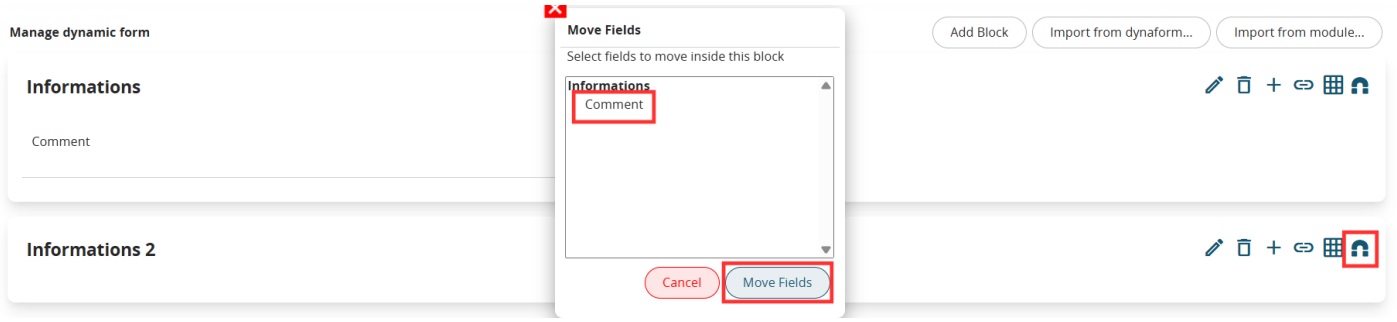


Figure 10

Revision #2

Created 2025-05-21 14:06:22 UTC by Riccardo

Updated 2025-06-10 11:06:25 UTC by Tommaso