

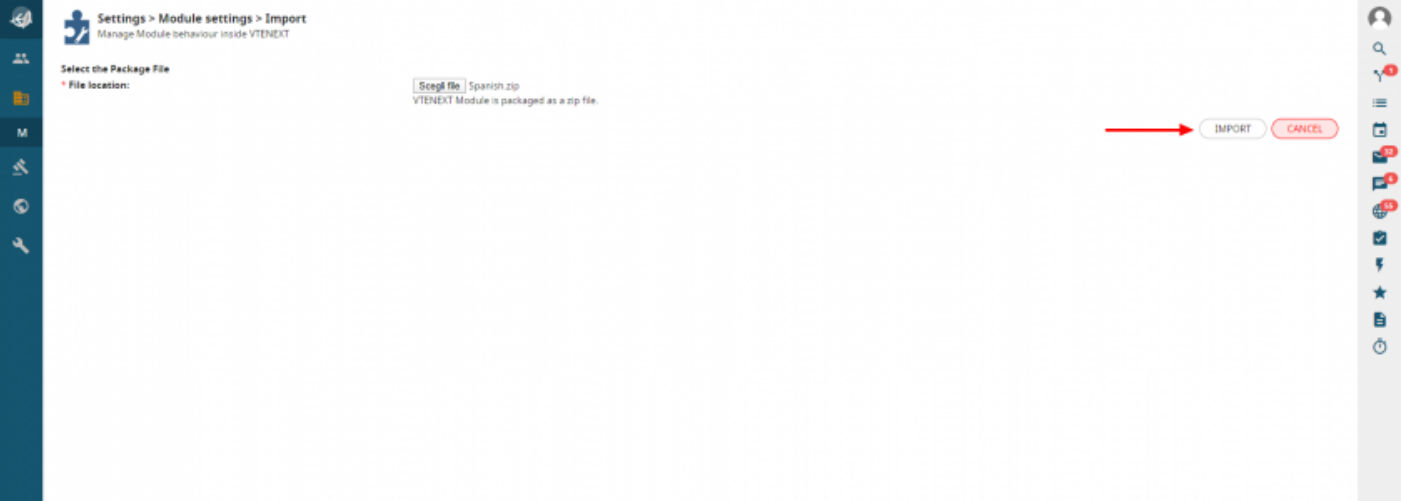
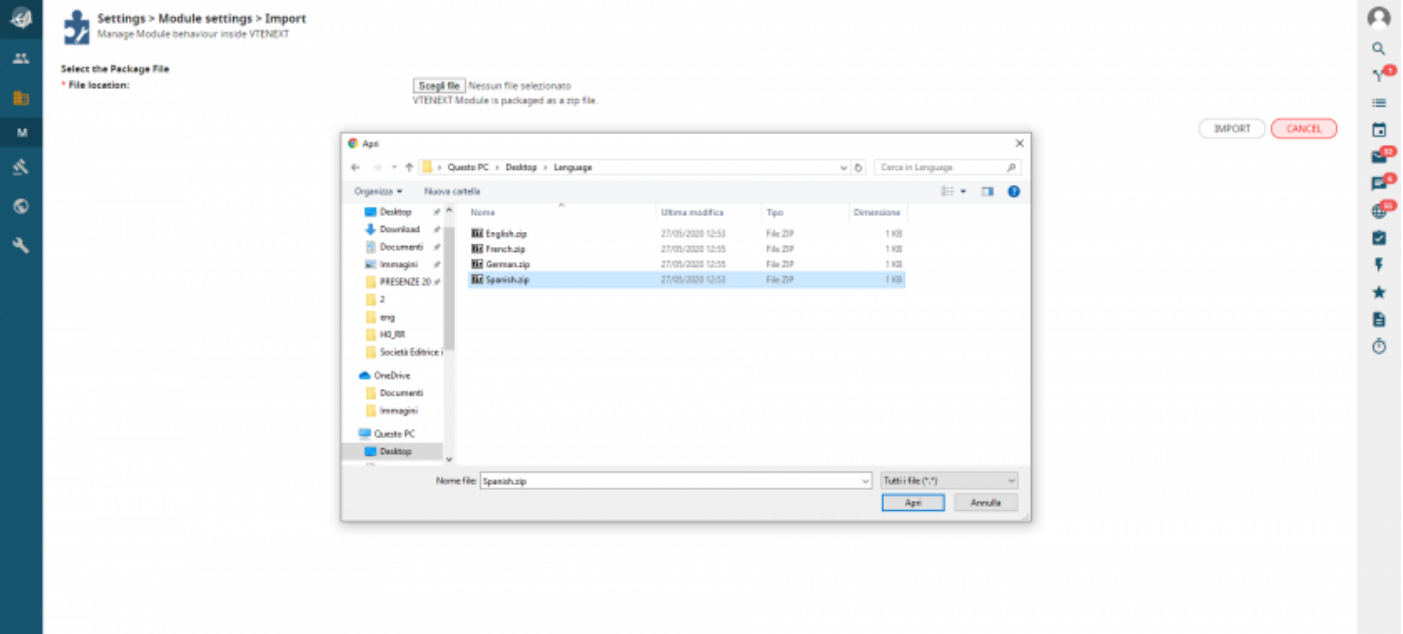
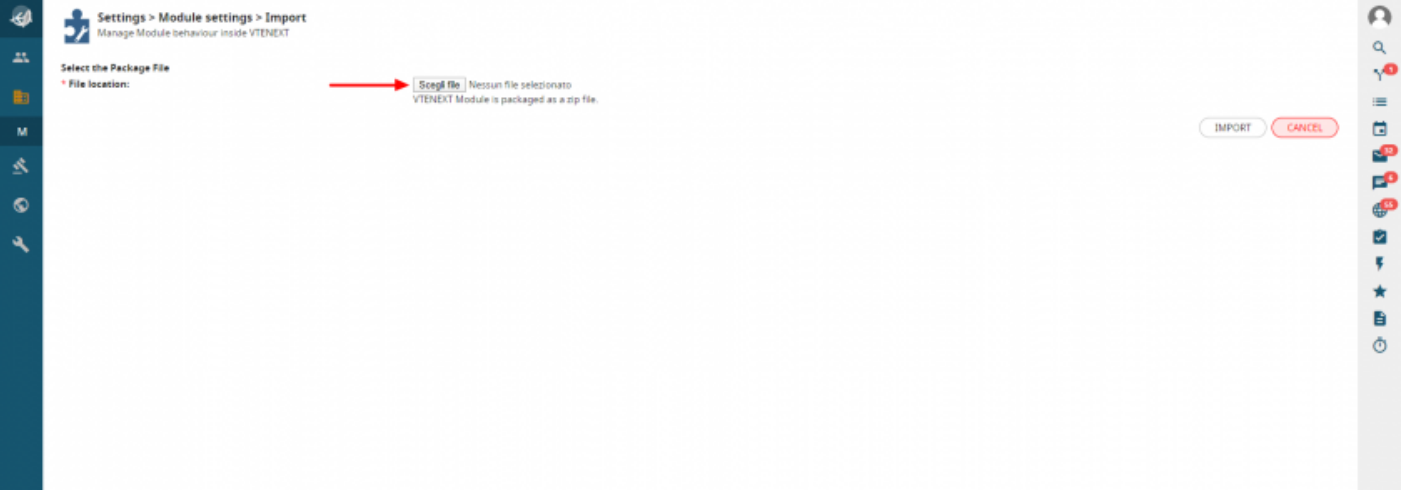
17.6.3 Import new language pack

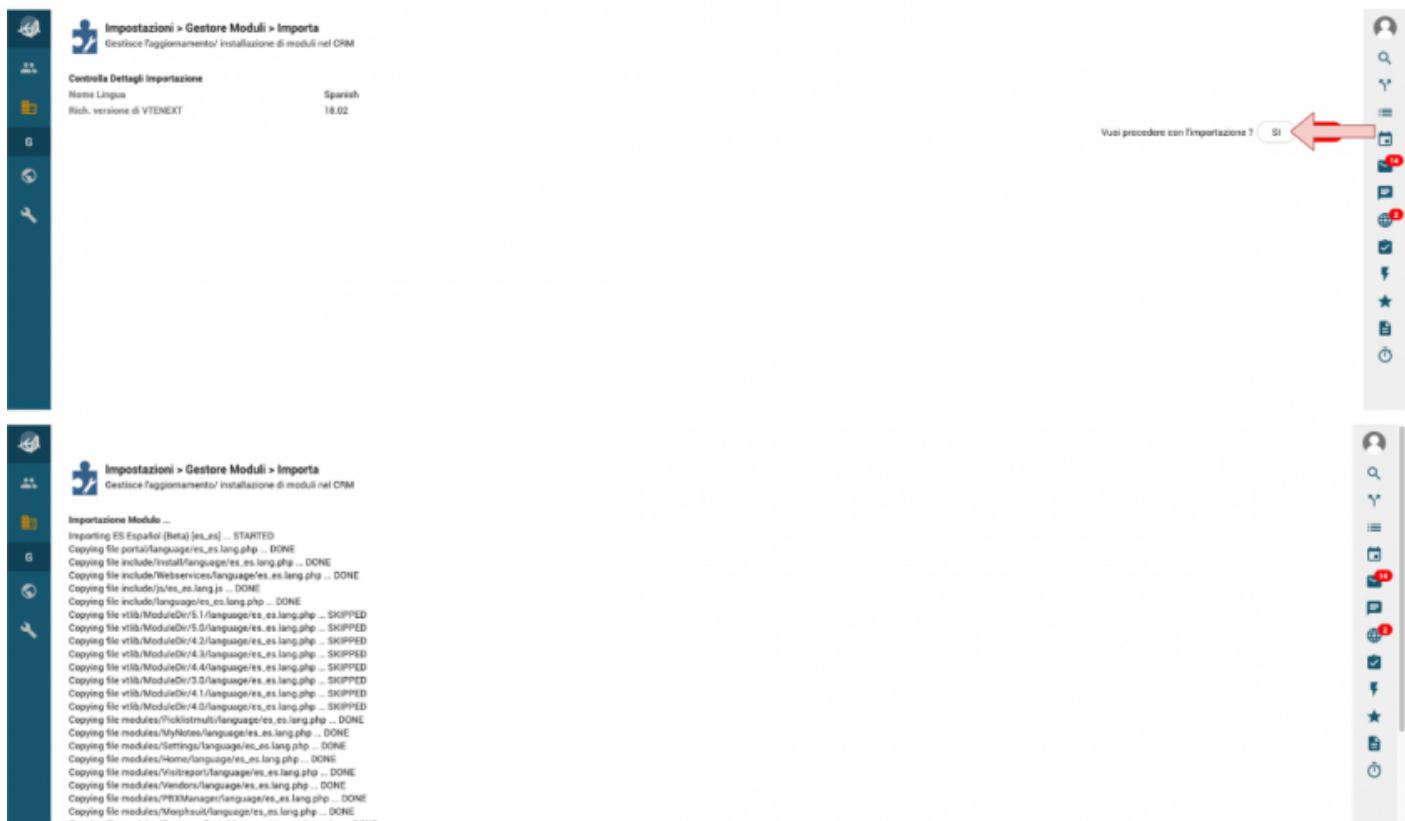
The module manager allows you to import a new language package. The procedure below sets out the installation steps.

The screenshot displays the 'Settings > Module settings' interface for VTE. The top section, titled 'Manage Module behaviour inside VTE', shows the 'Standard Modules' tab selected. A red arrow points to the 'Custom Modules' tab. The 'Standard Modules' list includes: Accounts, Assets, Calendar, Campaigns, Change Log, Charts, Conditionals, Contacts, CustomerPortal, Delivery Notes, Documents, Email, FAQ, Fax, Field Formulas, Geolocalization, and Trouble Tickets. The bottom section, titled 'Manage Module behaviour inside VTENEXT', shows the 'Custom Modules' tab selected. A red arrow points to the 'IMPORT NEW MODULE' button. The 'Custom Modules' list includes: Answers, Actions, Configurable products, Employees, Job Orders, Questions, Telemarketing, IT Italiano, NL Dutch, DE Deutsch, PT Português, RU Русский (Beta), PL Polski (Beta), FR Français (Beta), and ES Español (Beta).

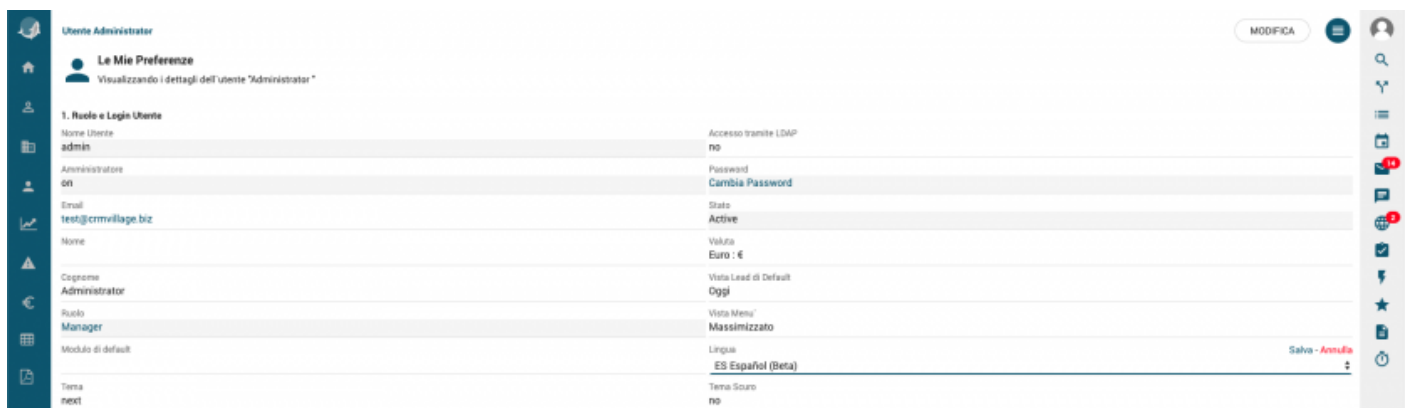
Module Name	Status
Accounts	✓
Assets	✓
Calendar	✓
Campaigns	✓
Change Log	✓
Charts	✓
Conditionals	✓
Contacts	✓
CustomerPortal	✓
Delivery Notes	✓
Documents	✓
Email	✓
FAQ	✓
Fax	✓
Field Formulas	✓
Geolocalization	✓
Trouble Tickets	✓

Module Name	Status
Answers	✓
Actions	✓
Configurable products	✓
Employees	✓
Job Orders	✓
Questions	✓
Telemarketing	✓
IT Italiano	✓
NL Dutch	✓
DE Deutsch	✓
PT Português	✓
RU Русский (Beta)	✓
PL Polski (Beta)	✓
FR Français (Beta)	✓
ES Español (Beta)	✓





The new language can be changed in the user preferences.



Revision #1

Created 25 May 2022 17:25:36 by Alberto

Updated 6 June 2022 12:30:15 by Alberto